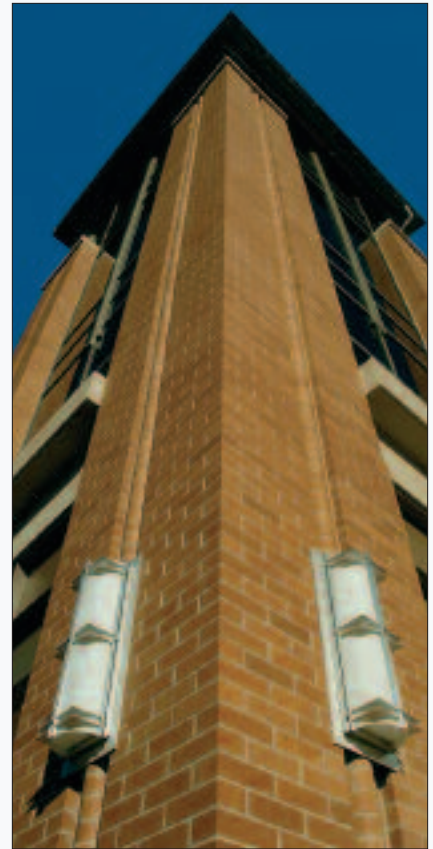


Lancaster General Hospital

Lancaster, Pa.



Project Participants

Masonry Contractor: Witmer & McCoy Inc., Mount Joy, Pa.

Architect: IKM Inc., Pittsburgh, Pa.

Masonry Suppliers: Granite Importers Inc., Barre, Vt.; Indiana Stoneworks Inc., Bedford, Ind.; Arriscraft International, Cambridge, Ontario, Canada; Pennsylvania Stone Products Inc., York, Pa.; Glen Gery Corp., Middleton, Pa.; Binkley & Ober Inc., East Petersburg, Pa.; and Berks Products Corp., Temple, Pa.

The three-story hospital entrance and façade contract required Witmer & McCoy to place more than 120,000 brick, including 4000 special shapes, 30,000 CMUs, 650 pieces of Indiana limestone, 400 pieces of Maine granite, 200 cubic feet of cast stone, and nearly 2000 units of manufactured limestone.

Work with the manufactured limestone

required the contractor's crew to pay close attention to the tolerances, which were only allowed a maximum $\frac{1}{16}$ -in. deviation in all planes between units. Inspections by the designer and owner revealed that none of the nearly 2000 units were found to be out of specification. The only rework required was some minor grinding of a few surface abnormalities.